

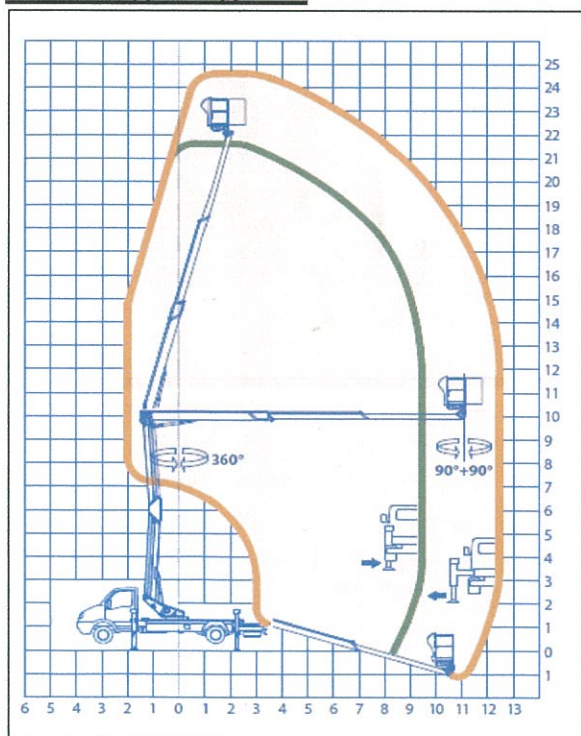
25m double pantograph articulated boom



Specification:

- Working height: 25m
- Platform height: 23m
- Maximum outreach: 12.5m
- Safe working load: 220kg
- Turret rotation: 360°
- Basket rotation: 90° + 90°
- Basket size: 1.7*0.7 m
- Min. working width: 2.16m
- Travelling height: 2.71m
- Travelling width: 2.16m
- Travelling length: 7.2m
- Weight approx: 7.0ton

Working Diagram



Advantages

- Ideal for movie lighting set up, outdoor advertising , window cleaning, aerial video(i.e. news), air condition inspection
- The world most compact machine in its range
- Can be work in urban city and very narrow street thanks to Variable outriggers system.
- Articulated boom that enable to over reach obstructions at 10meter height
- Double pantograph arms enable to work perfectly in vertical from 3m to 10m height.
- Work loading upgraded to 220 kg and large cage
- Trustable and very stabilize machine.
- Matchless by Japanese machine

Address: 1/F,No.117,Pak Sha Wan, Sai Kung, N.T. Hong Kong

Tel: (+852) 2358 2720 – Fax: (+852)2358 4825

Email: yuihoengineering@gmail.com